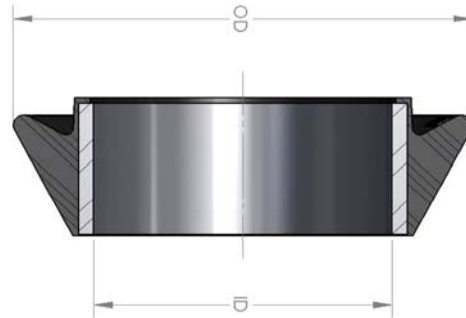


Swab Cup

GE-CC



SWAB CUP, GE-CC



Description:

Western Silverline carries the V Series Swab Cup in a light duty and heavy duty all rubber cup that is suited for use in fluids with high concentrations of suspended sand. The upturned lips pass easily through tight spots and will invert to dump excessive loads.

The number of cups used will vary with conditions.

Our special Frac Fluid compound has excellent abrasion resistance high tensile strength and outstanding resistance to chemical attack.



Guiberson Profile:

Nom. OD (inch)	Core and Description	Cup OD	Part#	Cup ID
1.900" (1-1/2")	Steel Core Swab Cup	1.530"	ER-15RV	.902"
2-3/8" (2")	Steel Core Swab Cup	1.980"	ER-20RV	1.120"
2-7/8" (2-1/2")	Steel Core Swab Cup	2.410"	ER-25RV	1.334"
3.85"	Steel Core Swab Cup	3.850"	CC385-G	2.495"
4-1/2"	Steel Core Swab Cup	4.062"	CC45-G	2.495"
4-1/2"	Steel Core, Heavy Duty Swab Cup	4.062"	CC45-HD	2.495"
4.72"	Steel Core Swab Cup	4.72"	CC472-G	2.495"
4.85"	Steel Core Swab Cup	4.85"	CC485-G	2.495"
5-1/2"	Steel Core Swab Cup	4.970"	CC55-G	2.495"

****Note: Guiberson Profile V Swab Cups also available in Frac Material for sizes 3.85" to 5-1/2"**

Oil States Profile:

Nom. OD (inch)	Core and Description	Cup OD	Part#	Cup ID
4-1/2"	Steel Core Swab Cup	4.030"	11-1090	2.495"
5-1/2"	Steel Core Swab Cup	4.960"	11-1100	2.935"
5-1/2"	Steel Core Undersize ID Swab Cup	4.960"	11-1105	2.495"

www.westernsilverline.com

Western Silverline

sales@westernsilverline.com

Phone: 780- 438-1605, Fax: 780-438-5319, Mail: 9856-41 Avenue, Edmonton, Alberta T6E 5L6 Canada