

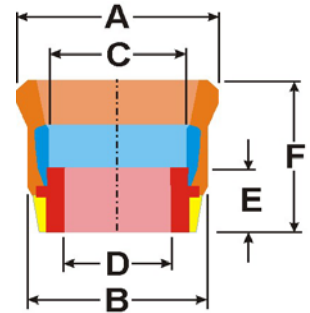
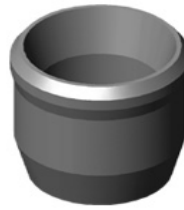
ECP Packer Cups 3-1/2" - 26"



Material:

- HSN / HNBR
- EPDM
- Viton
- Aflas
- Other available

Durometer: ● 60-90 Shore



Size	Part No.	Western Silverline Part #	WF/FT	Casing ID	A	B	C	D	E	F
4 1/2"	E2ECP45024111		9.5-11.6#	4-1/2" x						
	E2ECP45024113		12.6-13.5#	4-1/2" x						
5"	E2ECP50029115		13-15#	5" x 2-7/8"						
	E2ECP50029121		18-21#	5" x 2-7/8"						
	E2ECP50030317		18-21#	5" x 3.03"						
5-1/2"	E2ECP550353	ECP-550353	15-17#	5-1/2" x 3-1/2"						
	E2ECP550TH353		15-17#	5-1/2" x 3-1/2"						
6 5/8"	E2ECP65840328		24-28#	6-5/8" x 4-1/32"						
	E2ECP65845328	ECP-65845	20-23#	6-5/8" x 4-1/2"						
7"	E2ECP70045323	ECP-70045323	20-23#	7" x 4-1/2"						
	E2ECP70049035		29-35#	7" x 4.90"						
	E2ECP7005031	ECP-7005031	20-23#	7" x 5"						
	E2ECP70053726		26#	7" x 5-3/8"						
	E2ECP70055317	ECP-7005531718	17#	7" x 5-1/2"						
	E2ECP70055323	ECP-70055323	20-23#	7" x 5-1/2"						
8 5/8"	E2ECP85855336	ECP-85855336	28-36#	8-5/8" x 5-1/2"						
	E2ECP85865824	ECP-85865824	20-24#	8-5/8" x 6-5/8"						
	E2ECP85865836		28-36#	8-5/8" x 6-5/8"						
	E2ECP85870024	ECP-858700024	20-24#	8-5/8" x 7"						
	E2ECP85870036		36-40#	8-5/8" x 7"						
9 5/8"	E2ECP95850040		36-43#	9-5/8" x 5"						
	E2ECP95855343	ECP-95855343	36-43#	9-5/8" x 5-1/2"						
	E2ECP95870040	ECP-95870040	36-40#	9-5/8" x 7"						
	E2SE95870053		47/53#	9-5/8" x 7"						
10 3/4"			32-55#	10-3/4" x 5-1/2"						
	CALL FOR AVAILABILITY		32-55#	10-3/4" x 6-5/8"						
			32-55#	10-3/4" x 7"						
			32-55#	10-3/4" x 8-5/8"						
			32-55#	10-3/4" x 9-5/8"						
11 3/4"	CALL FOR AVAILABILITY		38-54#	11-3/4" x 7"						
			38-54#	11-3/4" x 8-5/8"						
13 3/8"	CALL FOR AVAILABILITY		54.5-72#	13-3/8" x 9-5/8"						

ECP Packer Cups 3-1/2" - 26"



Material:

- HSN / HNBR
- EPDM
- Viton
- Aflas
- Other available

Durometer: ● 60-90 Shore



ECP Packer Cup

ECP Packer Cups

Part No.	Size	WF/FT
E2ECP45024111	4 1/2" x	9.5 - 11.6#
E2ECP45024113	4 1/2" x	12.6 - 13.5#
E2ECP50029115	5" x 2 7/8"	13 - 15#
E2ECP50029121	5" x 2 7/8"	18 - 21#
E2ECP50030317	5" x 3.03"	18 - 21#
E2ECP550353	5 1/2" x 3 1/2"	15 - 17#
E2ECP550TH353	5 1/2" x 3 1/2"	15 - 17#
E2ECP65840328	6 5/8" x 4 1/32"	24 - 28#
E2ECP65845328	6 5/8" x 4 1/2"	20 - 23#
E2ECP70045323	7" x 4 1/2"	20 - 23#
E2ECP70049035	7" x 4.90"	29 - 35#
E2ECP7005031	7" x 5"	20 - 23#
E2ECP70053726	7" x 5 3/8"	26#
E2ECP70055317	7" x 5 1/2"	17#
E2ECP70055323	7" x 5 1/2"	20 - 23#
E2ECP85855336	8 5/8" x 5 1/2"	28 - 36#
E2ECP85865824	8 5/8" x 6 5/8"	20 - 24#
E2ECP85865836	8 5/8" x 6 5/8"	28 - 36#
E2ECP85870024	8 5/8" x 7"	20 - 24#
E2ECP85870036	8 5/8" x 7"	36 - 40#
E2ECP95850040	9 5/8" x 5"	36 - 40#
E2ECP95855343	9 5/8" x 5 1/2"	36 - 43#
E2ECP95870040	9 5/8" x 7"	36 - 40#
E2SE958700053	9 5/8" x 7"	47 - 53#

ECP Packer Cups

Part No.	Size	WF/FT
Call For	1/2"	32 - 55#
Availability	5/8"	32 - 55#
	10 3/4" x 7"	32 - 55#
	5/8"	32 - 55#
	5/8"	32 - 55#
	11 3/4" x 7"	38 - 54#
	5/8"	38 - 54#
	5/8"	54.5 - 72#

Threaded Surge Tool Cups

Part No.	Size
E2STC658450TH	6 5/8" x 4 1/2"
E2STC700450TH	7" x 4 1/2"
E2STC858550TH	8 5/8" x 5 1/2"
E2STC958550TH	9 5/8" x 5 1/2"



Surge Tool Cup